

SURVEYORS NOTES

• DENOTES PERMANENT REFERENCE MONUMENT (P.R.M.)
ALL RADII ARE 25 FEET UNLESS OTHERWISE INDICATED.
DISTANCES ON CORNER LOTS ARE TO THE INTERSECTION OF BLOCK LINES UNLESS OTHERWISE INDICATED.

A STRIP OF LAND 6 FEET IN WIDTH AT THE REAR AND/OR SIDES OF CERTAIN LOTS AS INDICATED BY DASHED LINES IS RESERVED FOR THE INSTALLATION AND MAINTENANCE OF PUBLIC UTILITIES AND DRAINAGE FACILITIES.

SMALL CIRCLES O AT CENTERLINE P.C.'S, P.T.'S AND P.I.'S INDICATE PERMANENT CONTROL POINTS (P.C.P.) TO BE SET ACCORDING TO LAW.

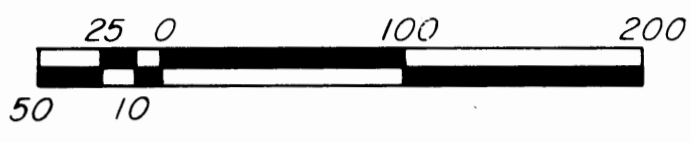
Table with 3 columns of curve data including bearings, angles, and distances for various curve points.

THIRD ADDITION TO INDIANTOWN PARK

A SUBDIVISION OF A PORTION OF SECTION 5, TOWNSHIP 40 SOUTH, RANGE 39 EAST AND A PORTION OF SECTION 32, TOWNSHIP 39 SOUTH, RANGE 39 EAST, MARTIN COUNTY, FLORIDA.

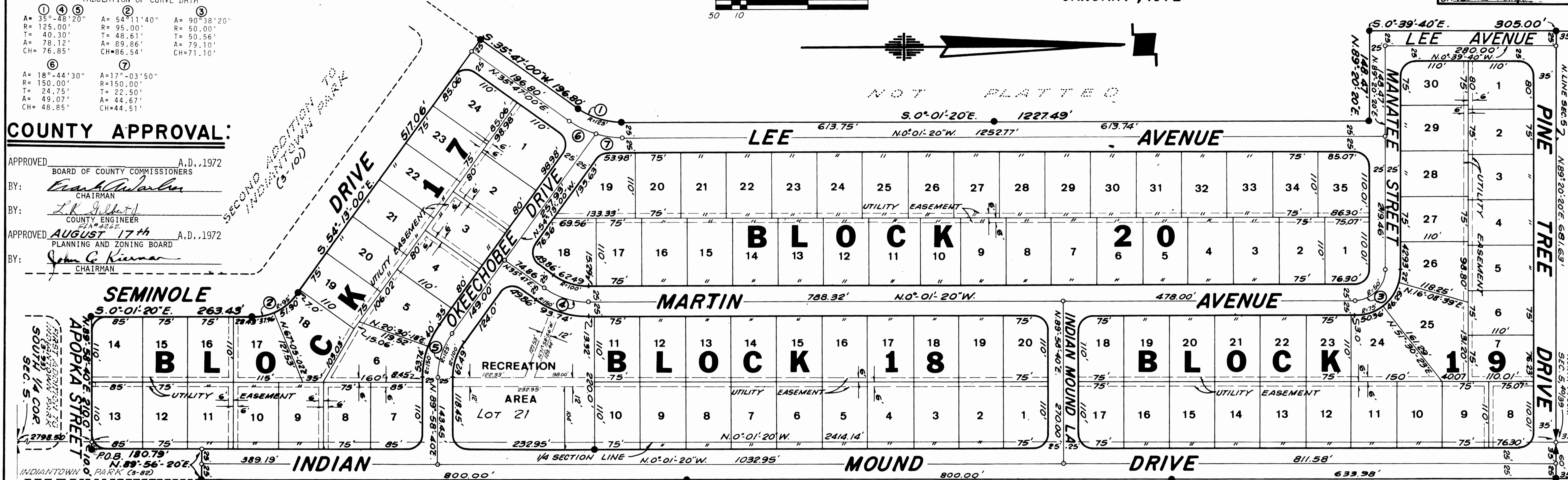
SCALE: 1"=80'

JANUARY, 1972



COUNTY APPROVAL:

APPROVED: A.D., 1972
BY: Frank ... CHAIRMAN
BY: L.K. Gilbert ... COUNTY ENGINEER
APPROVED: AUGUST 17th A.D., 1972
BY: John C. ... CHAIRMAN



DEDICATION:

STATE OF FLORIDA
COUNTY OF MARTIN
KNOW ALL MEN BY THESE PRESENTS, THAT "TAYLOR MADE OF FLORIDA, INC.," A FLORIDA CORPORATION, AND "BAY PARK TOWERS, INC.," A FLORIDA CORPORATION...

FROM THE SOUTH QUARTER CORNER OF SAID SECTION 5, BEAR NORTH 0°01'20" WEST, ALONG THE NORTH-SOUTH QUARTER LINE OF SAID SECTION 5, A DISTANCE OF 2798.50 FEET TO AN INTERSECTION WITH THE NORTH RIGHT-OF-WAY LINE OF APOPKA STREET...

HAVE CAUSED THE SAME TO BE SURVEYED AND PLATTED AS SHOWN HEREON, AND DOES HEREBY DEDICATE TO THE PERPETUAL USE OF THE PUBLIC, AS PUBLIC HIGHWAY, THE STREETS SHOWN HEREON...

NOT PLATTED SURVEYORS CERTIFICATE:

STATE OF FLORIDA
COUNTY OF PALM BEACH
I HEREBY CERTIFY THAT THE PLAT SHOWN HEREON IS A TRUE AND CORRECT REPRESENTATION OF A SURVEY MADE UNDER MY DIRECTION...

DEDICATION: CONTINUED

IN WITNESS WHEREOF, THE SAID CORPORATIONS HAVE CAUSED THESE PRESENTS TO BE SIGNED BY THEIR PRESIDENTS AND ATTESTED TO BY THEIR SECRETARIES AND THEIR CORPORATE SEALS TO BE AFFIXED HERETO...

ATTEST: Bree S. Horowitz SECRETARY
ATTEST: James H. ... SECRETARY
BY: Jack Taylor PRESIDENT
BY: Jack Taylor PRESIDENT

ACKNOWLEDGEMENT:

STATE OF FLORIDA
COUNTY OF DADE
I HEREBY CERTIFY, THAT ON THIS DAY PERSONALLY APPEARED BEFORE ME, AN OFFICER DULY AUTHORIZED TO ADMINISTER OATHS AND TAKE ACKNOWLEDGEMENTS...

WITNESS MY HAND AND OFFICIAL SEAL AT MIAMI, COUNTY OF DADE AND STATE OF FLORIDA, THIS 27th DAY OF APRIL, A.D., 1972.

DEDICATION:

STATE OF FLORIDA
COUNTY OF MARTIN
KNOW ALL MEN BY THESE PRESENTS THAT "INDIANTOWN COMPANY," A FLORIDA CORPORATION, THE OWNERS OF A TRACT OF LAND, LYING AND BEING IN SECTION 32, TOWNSHIP 39 SOUTH, RANGE 39 EAST, MARTIN COUNTY, FLORIDA...

IN WITNESS WHEREOF, THE SAID CORPORATION HAS CAUSED THESE PRESENTS TO BE SIGNED BY ITS PRESIDENT AND ATTESTED TO BY ITS SECRETARY AND ITS CORPORATE SEAL TO BE AFFIXED HERETO...

ATTEST: Jack A. Robinson ASSISTANT SECRETARY
BY: Robert M. ... EXECUTIVE VICE PRESIDENT

ACKNOWLEDGEMENT:

STATE OF FLORIDA
COUNTY OF MARTIN
I HEREBY CERTIFY, THAT ON THIS DAY PERSONALLY APPEARED BEFORE ME, AN OFFICER DULY AUTHORIZED TO ADMINISTER OATHS AND TAKE ACKNOWLEDGEMENTS...

WITNESS MY HAND AND OFFICIAL SEAL AT INDIANTOWN, COUNTY OF MARTIN AND STATE OF FLORIDA, THIS 20th DAY OF APRIL, A.D., 1972.

DEDICATION:

STATE OF FLORIDA
COUNTY OF MARTIN
KNOW ALL MEN BY THESE PRESENTS THAT "CIRCLE T RANCH, INC.," A FLORIDA CORPORATION, THE OWNERS OF A TRACT OF LAND, LYING AND BEING IN SECTION 32, TOWNSHIP 39 SOUTH, RANGE 39 EAST, MARTIN COUNTY, FLORIDA...

IN WITNESS WHEREOF, THE SAID CORPORATION HAS CAUSED THESE PRESENTS TO BE SIGNED BY ITS PRESIDENT AND ATTESTED TO BY ITS SECRETARY AND ITS CORPORATE SEAL TO BE AFFIXED HERETO...

ATTEST: ... SECRETARY
BY: ... PRESIDENT

ACKNOWLEDGEMENT:

STATE OF FLORIDA
COUNTY OF MARTIN
I HEREBY CERTIFY, THAT ON THIS DAY PERSONALLY APPEARED BEFORE ME, AN OFFICER DULY AUTHORIZED TO ADMINISTER OATHS AND TAKE ACKNOWLEDGEMENTS...

WITNESS MY HAND AND OFFICIAL SEAL AT Miami, COUNTY OF Dade AND STATE OF FLORIDA, THIS 10th DAY OF April, A.D., 1972.

LINDAHL - O'BRIEN, INC. ENGINEERS - SURVEYORS